



THE COMPANY

MISSION & VALUES

We are a trusted and adaptable manufacturer, offering cost-effective solutions through one of the world's leading construction systems, delivering completely thermal bridge-free and energy-efficient buildings.

We cultivate a proactive culture built on transparency, innovation, and continuous improvement, establishing a strong foundation for success and growth for all stakeholders.

With a physical presence in Hungary/European Union and the United Arab Emirates, we are strategically positioned to deliver our products and services to the region.



POSITION IN THE MARKET



HEADQUARTERS

Budapest (Hungary), Abu Dhabi (UAE)



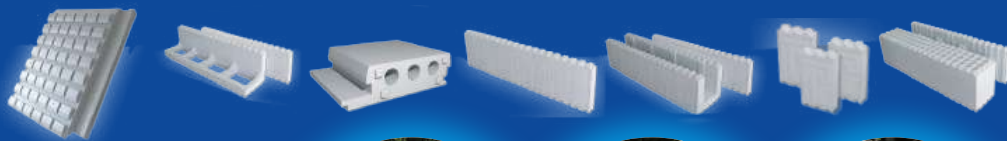
MORE THAN **20,000**
BUILDINGS REALIZED IN THE LAST
30 YEARS IN EUROPE:

England, Germany, France, Italy, Switzerland, Sweden, Spain, Poland, Austria, Czech Republic, Slovenia, Croatia, Romania, Bulgaria, Slovakia, Hungary.

SCOPE OF ACTIVITY

PROKONCEPT BUILDING SYSTEM

Construction of energy-savings and passive buildings, technical management, architect design.



The 25 cm thick masonry element is not only durable and stable but also an ideal choice for pool construction.

LEADERSHIP TEAM



MR. ZSOLT VIGH
CEO / OWNER

✉ vigh.zsolt@prokoncept.hu



MR. CSABA KOLLÁR
Business Development Director

✉ csaba.kollar@popuae.com
☎ +971 56 338 9027

VALUES SHAPING OUR CORPORATE CULTURE



Competency



Transparency



Loyalty
(long-term
relationships)



Reliability



Compliance



Sustainability

Up to **70%** savings on construction time

at least **50%** less labor cost

Up to **70%** energy savings

60-70% less living cost

100 years of durability

PRODUCTS & SERVICES

Energia Unió Zrt. specializes in the production and distribution of stay-in-place, polystyrene-based insulation formwork elements (ICF) under the ProKoncept building system. The system's key feature is its simple construction; the technology enables building the structure and achieving perfect, thermal-bridge-free insulation in ONE STEP.

The technology developed in Germany and Hungary creates a robust construction system that combines a concrete structure, resistant to soil movement and floods, with Neopor's excellent insulation properties. The system's success lies in its ease of construction. ProKoncept technology allows for simultaneous structure building and flawless, thermal bridge-free insulation in a single step resulting low-energy or even passive houses.



PROKONCEPT – THE LOCAL BASED FACTORY

(UAE / GCC)

INVEST IN THE FUTURE! ENERGY-SAVING BUILDINGS!



GROWING MARKET DEMAND
SUSTAINABILITY & ENVIRONMENTAL BENEFITS
REDUCED COST / HIGHER MARGINS
TECHNOLOGICAL & PRODUCTION EFFICIENCY
VERSATILE APPLICATIONS
SUPPORT FOR LOCAL ECONOMY

 The Energy-saving Building System

FAST
RETURN ON
INVESTMENT*

Investment with a potential
payback within

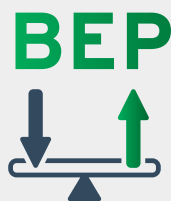
1.5 YEAR

*based on UAE market calculations

PROKONCEPT
BUILDINGS
PROVIDE 

**40-50%
HIGHER
MARGINS**

compared to some
traditional buildings:
the unit cost-to-production
time ratio is excellent,
enabling fast, high-volume
production of quality products
with minimal waste.



less than
1.5 year
(4 machines)
/less than **2.5 years**
(2 machines)

EVEN BETTER EFFICIENCY FIGURES WITH 8 MACHINES



69%
(4 machines);
41% (2 machines)

Product cost
compared to import

50%



Huge cost savings by
eliminating shipping costs.

SIGNIFICANT COST
REDUCTIONS
FOR DOMESTIC
TRANSPORTATION:



as the product is
easy to load, handle,
and position.

ORIGINS OF
MACHINES
& KNOWHOW



INSULATED CONCRETE FORMS FACTORY SET UP LOCALLY:



**COST
SAVINGS**



**ENERGY
EFFICIENCY**



**SUSTAINABILITY
& ENVIRONMENTAL BENEFITS**



**DURABLE
CONSTRUCTION MATERIALS**



NO SPECIAL
MACHINERY OR
EXPERTISE IS
REQUIRED.



**AUTOMATION
POTENTIAL:**
ProKoncept production
can be highly automated =
consistent product quality &
reducing labor cost!

PRODUCT-SPECIFIC TECHNICAL BENEFITS

- **Cost-effective**, eliminating the need for external insulation and **saving on labor, materials, and time.**
- **Lightweight**, precisely manufactured product with **millimeter accuracy.**
- Superior compatibility and precise dimensions over other building materials.
- **Wide variability** with product families covering all major construction phases, offering a **complete system.**
- Much **faster construction** compared to any other method.
- Quick, error-free fitting **without the need** for bonding agents.
- **Low skill requirements** due to its simple compatibility.
- **Easy transportation** and manual loading/unloading, **no machinery required.**
- **Excellent thermal insulation performance.**
- Significant time and cost savings with **faster, turnkey construction.**